

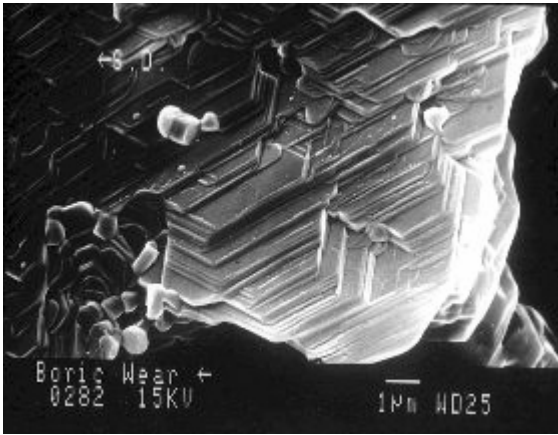
GREASE COMPARISON

ASTM Test Results	Lithium Complex Grease	Calcium Sulfanate Grease		CLS Boric Acid PAO Base
		1	2	
Additive-commercial ZN/P/S general EP/AW additives	Yes	No	No	No
D217 Cone test	286	X	262	335
Dropping point	312	>316	>316	None
Coefficient of friction value	X	X	X	>0.01%
Scar value	X	X	X	0.69
Water washout %	13.6	68.6	5.4	1.9
Timken OK load pounds	35	60	70	90+
Biodegradable	No	No	No	Yes
Corrosion (100) hours	X	X	X	No Rust
Thickener	Lithium	CS	CS	Synthetic Fume Silica

Understanding Boric Acid Extreme EP Technology

Boron CLS Bond® is based on the intricate crystal lattice structure (CLS) of the hydrated boron molecules. That lattice structure allows the layers of hydrated boron particles to slide virtually friction-free over each other, like the playing cards in a fresh deck, while retaining awesome strength. The ultra-fine sub-micron particles of hydrated boron reach every metal surface and crevice, lifting off all carbon, varnish and corrosion while lubricating with superior slipperiness as they chemically bond with the host material. Unlike any boundary lubricant the Boric Oxide forms a permanent self replenishing bond to metal alloy thus no shearing NO other anti wear boundary lubricant can chemically bond to metal which sets this technology apart from all other boundary lubricants.

The Boron CLS Bond™ line of advanced biodegradable lubrication products (over 20) result from decades of scientific research at Argonne National Laboratories, a U.S. Department of Energy facility dedicated to reducing energy loss and component wear from friction. Following long term extensive research for NASA, Tribologist working under the direction of Dr. Ali Erdemir discovered that Hydrated Boron Molecules, milled to under 1 micron (100X smaller than bacteria) form a permanent and self replenishing bond to any metal alloy thus creating an extremely slippery surface with a friction coefficient under 0.01% and the highest EP lubricant with a Timken of 90+ The result is an incredible 80% reduction in surface friction and 90% reduction in component wear.



Boric Acid Platelets (85% the hardness of a diamond)

Grease is grease, right? Unfortunately, the answer is not that simple, because there are many types of greases. If the right grease is not being used in equipment, you could be paying too much for replacement parts. On the other hand, the right grease can allow equipment to run for years without a maintenance problem. The key is learning which grease is right for your needs.

Greases on the market today rely upon inert (no bond to metal) boundary lubricant additives to protect against EP (Extreme Pressure) environments such as zinc dialkyldithiophosphates and molybdenum to assist against wear, not until the breakthrough of the Boric Acid technology from Argonne National Labs has there been much of an improvement in boundary lubrication, Boric Acid is greatest development in reducing surface friction while simultaneously offering the strongest platelet barrier protecting against wear and 100% anti-corrosive and biodegradable. This lubrication technology is for extreme environments protecting expensive equipment against component failure and downtime, in most cases the Boron CLS Bond™ grease will last 6 times longer than conventional greases.